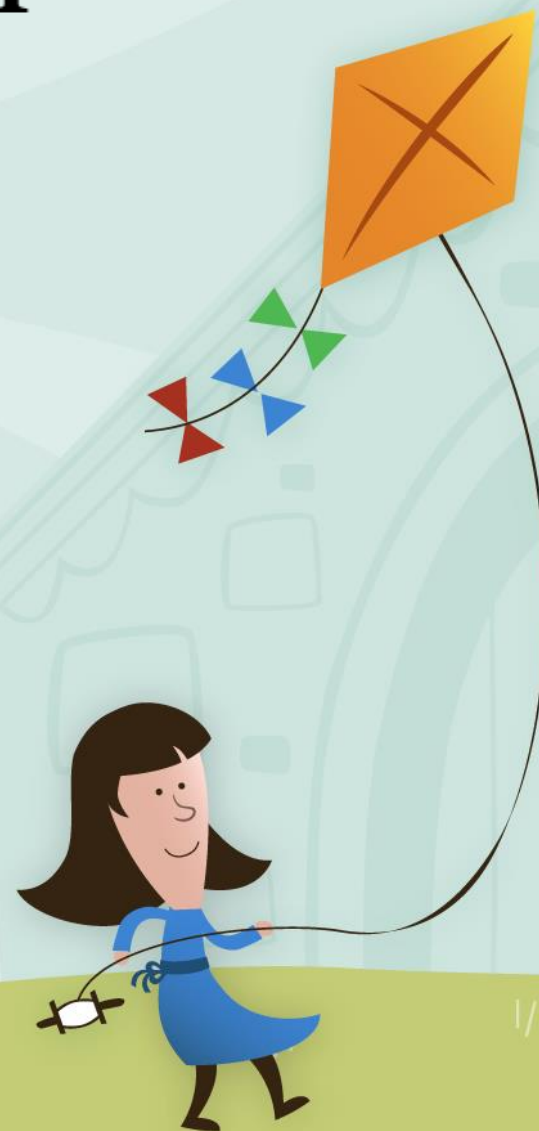




BOARSHAW COMMUNITY PRIMARY SCHOOL

Nursery and Reception Intake September 2023



Welcome to our school



Firstly let me welcome you to Boarshaw Primary School. We are looking forward to meeting you and your child.



Meet the staff- Reception



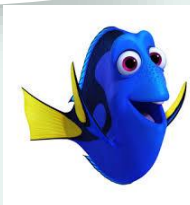
Mrs Dunn

Reception Clownfish Class
Teacher and Foundation Stage
Leader



Miss Fox

Reception Blue tang Class
Teacher



We have two
Reception
classes called
Clownfish and
Blue tang. There
are two
classroom bases
but children will
be able to access
the provision in
both classrooms.

Meet the staff- Nursery



Miss Ball

Nursery Sea Turtles Class
Teacher

We have one
Nursery class
that have their
own classroom
and share the
outdoor area
with Reception.



Other staff



Ms Harland
(Headteacher)

Mrs Facchin
(Deputy
Headteacher/S
ENCO)



Mrs Evans
(Early Help)

Mrs Parr
(School Business
Manager)



Mrs Meehan
(Senior
administrator)





Outdoors



Clownfish



Blue tang



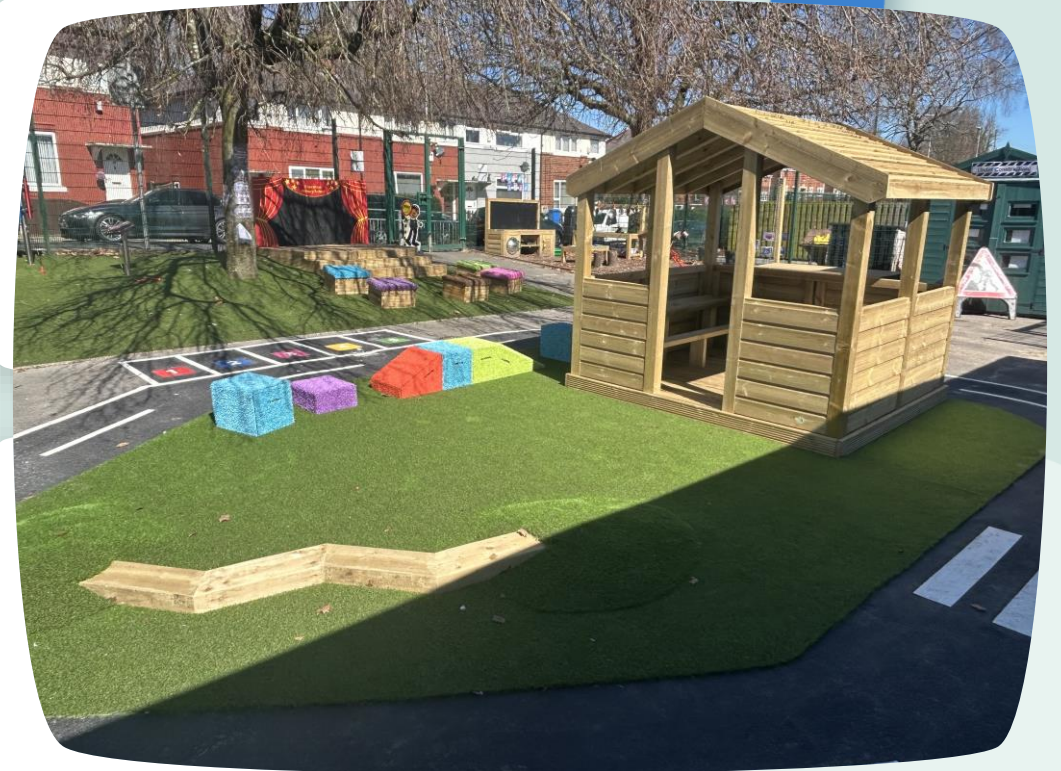
Reception

Children will access both classrooms and share the outdoor area with Nursery.



Sea Turtles Classroom

Nursery



Outdoors



What is the EYFS?

- ✚ EYFS is the Early Years Foundation Stage education for 5s and under
- ✚ There are 7 areas of learning- 3 prime areas and 4 specific areas, which we teach through areas of provision and directed activities.
- ✚ Children in Reception access the learning in both Reception classrooms and the outdoor area
- ✚ Children in Nursery will access the learning in their classroom, the sheltered area and the outdoor area.





General Information- Start of the day

- ✚ School day starts at 8:45am doors close at 9am.
- ✚ Breakfast club 8:00-8.45, £1 a day. This must be booked and paid for via Parent Pay
- ✚ Children in Nursery enter through the Nursery door which is situated under the shelter.
- ✚ Reception children enter through the door at the top of the reception ramp.
- ✚ Children will be supported into school by adults. There will be tears but children very quickly settle down once they are in school and are busy. We will contact you if you child is very upset and unable to settle.
- ✚ Please arrive on time it can be very unsettling for children who are late and have to walk through the school to get to class.
- ✚ All nursery children have access to 30 hour provision regardless of entitlement. Please ensure the office is informed of your 15 or 30 hour code.
- ✚ Children need to bring a bookbag to school which will be provided by school upon completion of all forms. No other bags, toys or teddies should come to school.





General Information- End of the day

- + School finishes at 3.15pm
- + Nursery children need to be collected from the Nursery door and Reception children collected from the reception ramp.
- + We offer an after school club until 5.30pm which is currently £4 a day. This needs to be booked and paid for on Parent Pay.
- Please ensure the collection form you returned to the office is completed and include everyone who may collect even Mum and Dad!
- Please ensure you arrive to collect on time children can become upset if no one comes to collect them. If for any reason you are going to be late please ring the school office to inform them.



What I need to start school

School Uniform

Black- trousers/skirts

White polo shirt

Grey jumper or cardigan

Black school shoes (Velcro fastening)

Bookbag (provided by school)

Summer dress/shorts may be worn in the summer.

Warm, waterproof coat

Wellington boots



LABEL IT OR LOSE IT

Please label everything!

Uniform is available to purchase at Icon on Middleton Arndale



EYFS is messy!

Please do not send children in expensive coats.
They will get dirty!



What I need to start school- Reception only

PE Kit

White T-shirt
Black shorts
Pumps/trainers
Jogging pants
Jumper



LABEL IT OR LOSE IT



Please send in a labelled PE kit in a drawstring bag. PE kits will be sent home at the end of every half term.



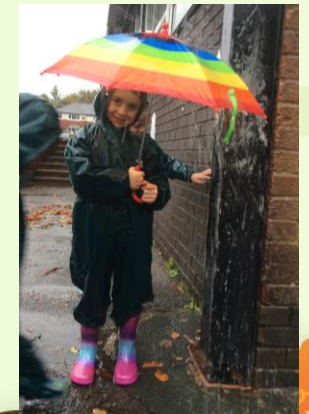
What I need to start school

Outdoor Clothes

Wellington Boots
Spare socks (lots!)
Change of clothes
Hat
Gloves
Cap/Summer hat (Summer only)

Children in Reception and Nursery will have access to outdoors throughout the year, in any weather. Please ensure children have a suitable outdoor coat. We ask that wellington boots are left in school all year. Please also ensure a full change of clothes, including multiple socks are in your child's book bag.

LABEL IT OR LOSE IT



Lunchtime

- Children will eat lunch in the canteen and all Reception children are entitled to a free school meal. Children in Nursery who wish to have a school dinner will be charged (currently £2.50) unless they are entitled to free school meals.
- We encourage all Reception children to have school dinners as this provides an opportunity for children to socialise with their new friends, enjoy trying new foods and helps with independence.
- Our kitchen offers a range of hot meals on a two week cycle (see website for further details).
- Daily options include jacket potatoes, panini and sandwiches.
- We encourage children to have a hot meal everyday. We allow one sandwich a week unless otherwise advised by parents.
- Please ensure we are informed of any allergies or dietary needs.



Parent Pay

- ✚ If your child is attending after school club or breakfast club these need to be booked and paid for via parents parent. Dinner money and any trip money must also be paid on here.
- ✚ ParentPay offers you the freedom to make payments whenever and wherever you like, 24 hours a day, 7 days a week - safe in the knowledge that the technology used is of the highest internet security available.
- ✚ When your child starts at school you will be sent further details regarding how to access this.





Parent Partnership

Home and school are the two most powerful influences on your child and they should always be working together.

It is vital that parents and teachers work together to ensure children receive the best education. At Boarshaw Primary we have various ways to keep you informed.



Class Dojo

This is an APP you download on your phone or access via laptop/tablet . You will be sent a unique code to link you to your child. You will be able to send messages to the class teacher on her. Teachers will also send your messages and pictures of what the class has been doing.

Tapestry

This is an APP you download on your phone or access via laptop/tablet and. It allows you to see what your child has been learning. Teachers will upload observations of children showing new learning. Parents can also upload pictures and information to tell the teacher what they have been doing at home.



facebook

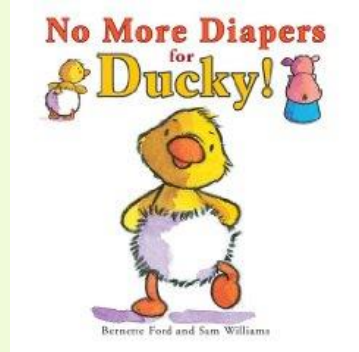
twitter

<https://www.boarshawprimary.co.uk/>



Toilet

- Please let us know if your child is not fully toilet trained, we are here to help.
- In the first few week lots of children have accidents. Please send in a spare set of clothes (skirt/ trousers, underwear and socks) in your child's book bag. Please ensure all items are labelled.



Dummies



A dummy stops me talking!

Dummies are fine when I am tired or upset but take it away so you can hear what I have to say!

Keeping a dummy in can affect my speech!

When I want to play or talk, take my dummy out.



Working together to achieve the healthiest life possible for everyone in Ayrshire and Arran

All our publications are available in other formats

Follow us on Twitter @weepeoplechat

Find us on Facebook at www.facebook.com/Linking-Language-and-Literacy-987956481322491/



- Still having a dummy can affect children's speech and consequently can impact on their development.
- If your child uses a dummy please try to reduce this and ultimately aim for removing it. We can help with this so please speak to a member of staff.



Getting to know you

- For children new to our school we have been making phone calls to parents to find out more about your child before they start school. If you haven't already received a phone call please speak to a member of staff this evening.
- We are holding two stay and play sessions one with parents (Wednesday 28th June) and one just for children (Tuesday 4th July). These sessions enable your child to get to know the staff and the classroom environments. Please note all paperwork needs to be completed and returned to the school office prior to the second stay and play so we can contact you if necessary.
- Details for the stay and play sessions have been sent out but if you are unsure please speak to a member of staff.
- Please inform us if you can not attend.
- Some children might need additional settling in sessions and these will be discussed with parents when necessary.



Tonight

- ✚ If you haven't completed all the data collection forms please complete tonight
- ✚ Meet the staff and look around the unit.
- ✚ Feel free to ask questions!

