

Boarshaw Primary School – History

LC: Who has made a Difference to Our World?

Significant individuals and events beyond living memory

Year 1

Key knowledge:

What key knowledge will I know by the end of the unit?

What should I know?

What the past means.

A person in history that has made a difference.

Historical skills and enquiry

To recognise and talk about a significant person from the past.

To recognise what changes occurred due to the significant person.



Princess Diana



Nelson Mandela



William Shakespeare



Neil Armstrong

Remembering Significant People

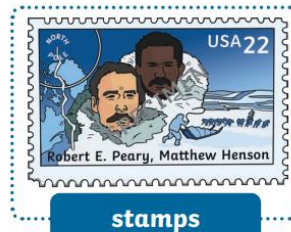
Significant people are people who have made important **achievements**. They are often remembered in different ways.



plaques



monuments



stamps

Key Vocabulary

significant

A person or event that has an effect on our lives today.

explorer

A person who explores the world and found new places.

past

Something that happened before today.

achievement




Something challenging that a person does well.

Princess

A member of the royal family.

Post Assessment – History – Significant individuals and events beyond living memory.

Learning Challenge: Who has made a difference to our world?

Post assessment	Post assessment
<p>1. What famous people do you know?</p>	<p>2. Why was Princess Diana described as the 'people's princess'?</p>  A portrait of Princess Diana, wearing a light purple blazer and a pearl necklace, looking slightly to the right.
<p>3. What did Nelson Mandela do?</p>  A photograph of Nelson Mandela speaking at a podium. He is wearing a grey suit and a green tie. A South African flag is visible in the background.	<p>4. What job did William Shakespeare do?</p>  A portrait of William Shakespeare, showing him with a dark beard and a white ruff collar, wearing a dark garment.
<p>5. How do you become famous?</p>	